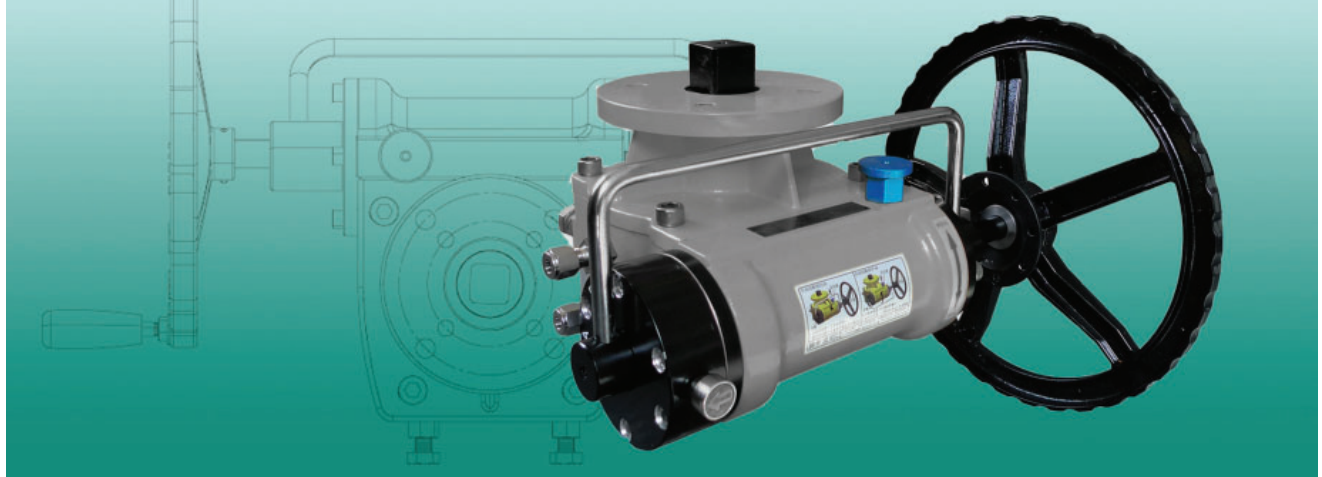


DMO-GO Declutchable Manual Override Gear Operator

DMO-GO Series

For use with *Automated Valves* and *Fail Safe Assemblies*



The DMO-GO is designed to mount between a valve and actuator as a means of operating the valve in loss of power or air supply, or as a loading and reset device for fail-safe assemblies. This heavy duty gear drive is readily engaged and disengaged by using a spring-loaded locking pin and easily accessible positioning lever. A unique air control safety feature closes the air supply in the manual position to prevent unwanted actuation during operation. Available in output torques ranging from 1,300 to over 35,000 in-lbs.

Standard Features and Benefits

- Heavy Duty Epoxy Coated Carbon Steel Construction
- IP67 Weatherproof Environmental Rating
- ISO 5211 Mounting Pad for Direct Coupling of Actuators
- Fully Enclosed, Self-Lubricated, High Torque Gear Drive
- Easy-Access Gear Engagement/Disengagement Mechanism with Spring-Loaded Locking Pin
- Patented Pneumatic Override Control to Prevent Valve Actuation in Manual Position
- Dual External Travel Stops for Easy In-Field Adjustments

Options

- Complete Valve Automation and Control Packages
- Fail-Safe Fusible Link Assemblies
- Handwheel Lock-Out Device

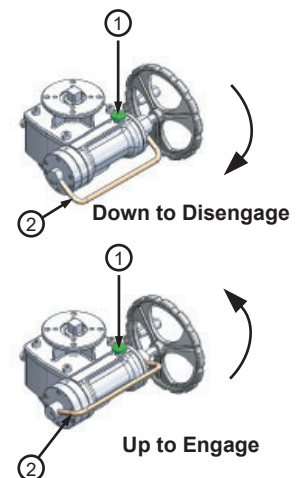
Mode of Operation

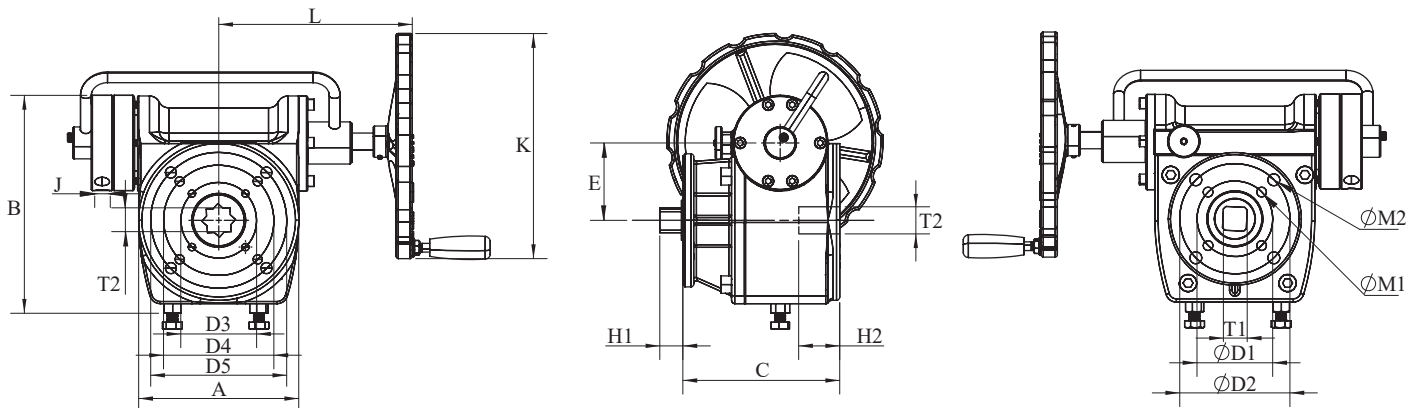
Manual (engaged) to Auto (disengaged)

1. Pull the Locking Pin ① upward to unlock the Shift Handle ②
2. Release the Locking Pin and lower the Shift Handle fully into the Auto position
3. Pin will lock in place when position has been reached

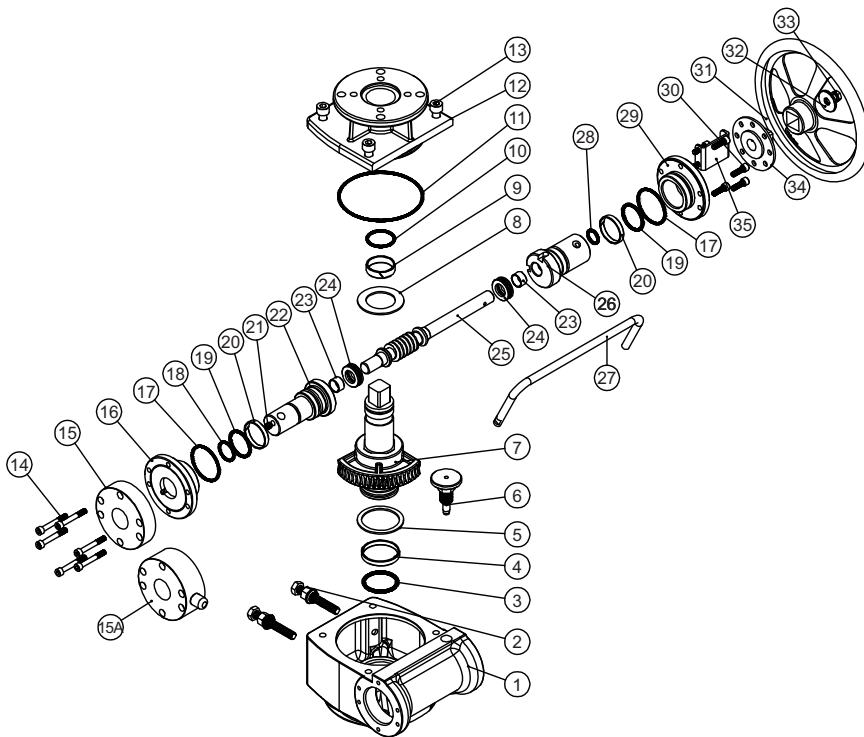
Auto (disengaged) to Manual (engaged)

1. Pull the Locking Pin ① upward to unlock the Shift Handle ②
2. Release the Locking Pin and raise the Shift Handle fully into the Manual position
3. Pin will lock in place when position has been reached





Dimensions (Inches)																				
Model	A	B	C	ØD1	ØD2	ØD3	ØD4	ØD5	E	L	M1	M2	T1	T2	H1	H2	K	J	Max Output Torque (in-lbs)	Weight (lbs)
015A	3.94	4.72	4.09	1.97	2.76	1.97	-	2.76	1.75	4.49	4 x M7	4 x M9	0.67	0.67	0.55	0.98	6.30	1/4"NPT	1328	11.2
015B	3.94	4.72	4.09	1.97	2.76	1.97	-	2.76	1.75	4.72	4 x M7	4 x M9	0.67	0.67	0.55	0.98	7.87	1/4"NPT	1770	11.2
060A	5.83	7.56	5.71	2.76	4.02	2.76	-	4.02	2.80	6.89	4 x M9	4 x M11	0.87	0.87	0.75	1.18	7.87	1/4"NPT	5310	35.4
090A	5.83	7.56	5.71	2.76	4.02	2.76	4.02	4.92	2.80	7.01	4 x M9	4 x M11	1.06	1.06	0.75	1.18	9.84	1/4"NPT	7966	36.3
160A	7.72	10.24	7.54	4.02	4.92	4.02	-	4.92	4.23	10.55	4 x M11	4 x M13	1.42	1.42	1.34	1.57	13.78	1/4"NPT	14161	70.4
350A	10.04	13.15	7.13	6.50	-	4.92	-	6.50	4.84	10.71	4 x M22	*	1.81	1.81	1.77	6.93	23.62	1/4"NPT	29207	101.2
350B	10.04	13.15	7.13	6.50	-	4.92	-	6.50	4.84	10.83	4 x M22	*	1.81	1.81	1.77	6.93	27.56	1/4"NPT	35403	106.7



Components			
No.	Part Name	Material	Qty
1	Body	WCB	1
2	Adjustable Travel Stop	304 SS / NBR	2
3	O-Ring	NBR	1
4	Bearing #1	POM	1
5	Bearing #2	POM	1
6	Spring Loaded Lock Pin	Aluminum / Steel	1
7	Shaft	45	1
8	Washer	POM	1
9	Bearing #3	POM	1
10	O-Ring	NBR	1
11	O-Ring	NBR	1
12	Cover	WCB	1
13	Screw	304 SS	4
14	Screw	304 SS	6
15	Outside Cap	45	1
15A	Air Supply Control*	Aluminum / C4	1
16	Left Cap	45	1
17	O-Ring	NBR	2
18	O-Ring	NBR	1
19	O-Ring	NBR	2
20	Eccentric Axle Bearing	POM	2
21	Bolt	304 SS	1
22	Eccentric Axle	45	1
23	Bearing	Steel & PTFE	2
24	Thrust Ball Bearing	Steel	2
25	Worm	45	1
26	Eccentric Axle	45	1
27	Shift Handle	Steel / Stainless Steel	1
28	O-Ring	NBR	1
29	Right Cap	45	1
30	Screw	304 SS	6
31	Handle Wheel	Nodular Cast Iron	1
32	Washer	304 SS	1
33	Bolt	304 SS	1
34	Lock-Out Disc*	45	1
35	Lock-Out Bracket*	45	1

*Optional



INLINE INDUSTRIES, INC.

9056 Garvey Avenue

Rosemead, CA 91770

Tel: (800) 568-8998

(626) 813-6188

Fax: (626) 813-6186

www.ballvalve.com

info@ballvalve.com

Distributed by: