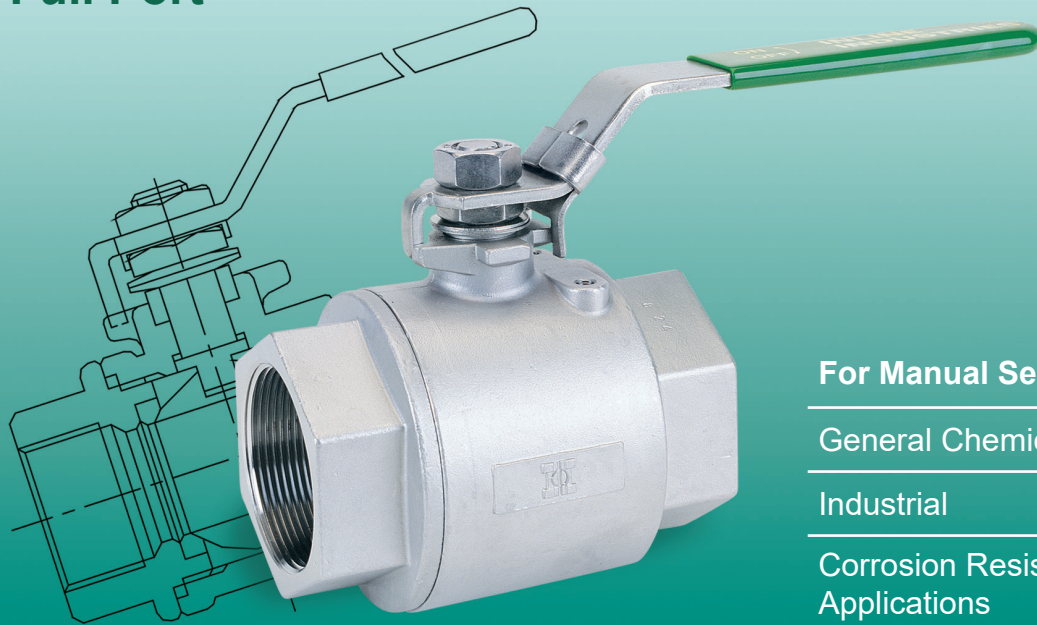


201F Ball Valve

2-Piece Full Port



For Manual Service

General Chemical

Industrial

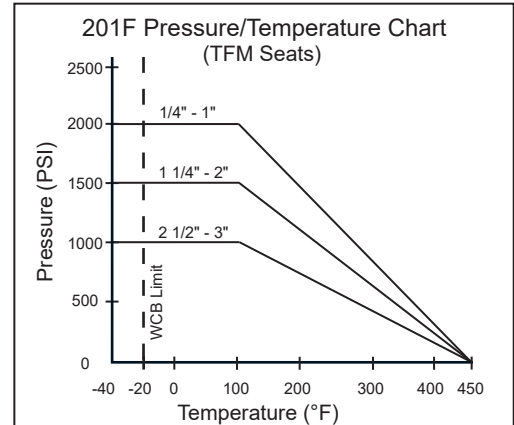
Corrosion Resistant Applications

Standard Features and Benefits

- **2-Piece Full Port Design**
Full port construction improves flow characteristics for greater process efficiencies
- **Blow-Out-Proof Stem**
Stem is bottom loaded to prevent removal during operation
- **High-Cycle, Live-Loaded Stem Packing**
Provides constant load on stem seal and extends service life
- **Locking Device**
Enables plant personnel to secure valve in open or closed position when manually operated
- **Corrosion Resistant Trim**
Made of 316 stainless steel for superior chemical resistance and longer service life
- **Investment Cast**
Improves dimensional control and reduces porosity
- **Pressure Balancing Ball**
- **Castings to NACE MR0175/ISO 15156**

Options

- **Oval Handle**
- **Reverse Handle**
- **Material Test Reports Available Upon Request**

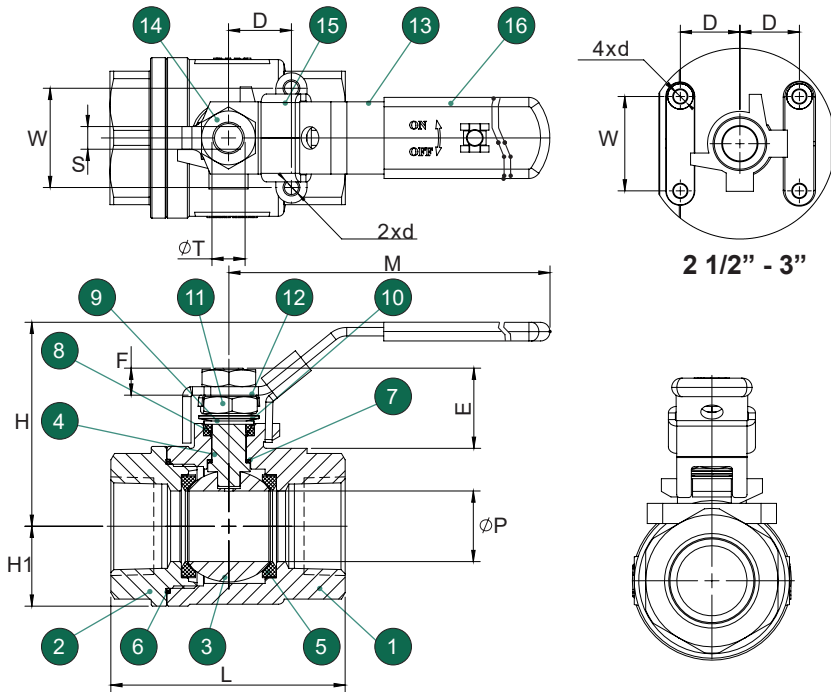


Operating Conditions

- **Temperature Range (TFM):**
-40°F ~ 450°F
- **Maximum Pressure: (TFM):**
2000 PSI CWP (1/4" - 1")
1500 PSI CWP (1 1/4" - 2")
1000 PSI CWP (2 1/2" - 3")

Specifications

- All valves designed and pressure tested in accordance with ASME B16.34, API 598 and MSS-SP-110
- NSF/ANSI/CAN 61 & 372 Certified
- NPT to ASME B1.20.1



Valve Components			
No.	Part Name	Material	Qty
1	Body	A351 CF8M	1
2	End Cap	A351 CF8M	1
3	Ball	316 SS	1
4	Stem	316 SS	1
5	Seat	TFM	2
6	Body Seal	TFM	1
7	Thrust Washer	TFM	1
8	Stem Packing Set	TFM	1
9	Belleville Washer	301 SS	2
10	Packing Gland	304 SS	2
11	Gland Nut	304 SS	1
12	Gland Nut Lock Washer	304 SS	1
13	Handle	304 SS	1
14	Handle Nut	304 SS	1
15	Handle Lock	304 SS	1
16	Handle Cover	Vinyl	1

Dimensions (Inches)													Cv	Weight (lbs)
Size	L	P	M	H	H1	E	F	S	T	W	D	d		
1/4"	2.10	0.50	4.3	2.1	0.7	0.83	0.31	0.20	0.31	1.12	0.50	M5x0.8	5.3	0.8
3/8"	2.10	0.50	4.3	2.1	0.7	0.83	0.31	0.20	0.31	1.12	0.50	M5x0.8	11.4	0.8
1/2"	2.35	0.59	4.3	2.1	0.7	0.83	0.32	0.20	0.31	1.12	0.50	M5x0.8	16.3	1.0
3/4"	2.92	0.79	5.0	2.5	1.0	0.90	0.31	0.26	0.38	1.38	0.87	M5x0.8	30.3	1.8
1"	3.27	0.98	5.9	2.8	1.1	1.12	0.38	0.31	0.46	1.38	0.87	M5x0.8	48.4	2.7
1 1/4"	3.82	1.25	5.9	3.1	1.3	1.12	0.32	0.31	0.46	1.50	0.94	M5x0.8	72.5	3.6
1 1/2"	4.30	1.50	7.5	3.9	1.6	1.41	0.41	0.38	0.54	1.50	0.94	M6x1.0	115	5.7
2"	5.05	2.00	7.5	4.2	1.9	1.38	0.46	0.38	0.54	1.50	0.94	M6x1.0	190	9.0
2 1/2"	6.65	2.56	12.2	5.7	2.4	1.98	0.71	0.47	0.77	2.19	1.38	M8x1.25	335	18.8
3"	7.62	3.15	12.2	6.1	2.8	1.94	0.72	0.47	0.77	2.19	1.38	M8x1.25	544	26.9

Cv value represents flow data to ISA 75.01.01 - 2007

201F Ordering Information

Example: 2" Full Port Ball Valve with Lever Handle and Locking Device, 316 SS Body and Trim, TFM Seats and Seals, NPT Ends

Valve Series	Valve Size	Body Material	End Material	Ball Material	Stem Material	Seat	Seal	End Connection	Port Config	Ball Configuration	
201F - Full Port	2 3 5 7 A B C D E F	1/4" 3/8" 1/2" 3/4" 1" 1 1/4" 1 1/2" 2" 2 1/2" 3"	6 - A351 Gr. CF8M (316) 2 - A216 Gr. WCB	6 - A351 Gr. CF8M (316) 2 - A216 Gr. WCB	6 - 316 SS	6 - 316 SS	M - TFM F - 50% 316 SS Filled PTFE C - RTFE (15% C.F.)	M - TFM T - PTFE	T - NPT	2 - 2 Way	S - Straight Port

Due to continuous product development, information may change without notice.



INLINE INDUSTRIES, INC.

9056 Garvey Avenue
Rosemead, CA 91770

Tel: (800) 568-8998

(626) 813-6188

Fax: (626) 813-6186

www.ballvalve.com

info@ballvalve.com

Distributed by: