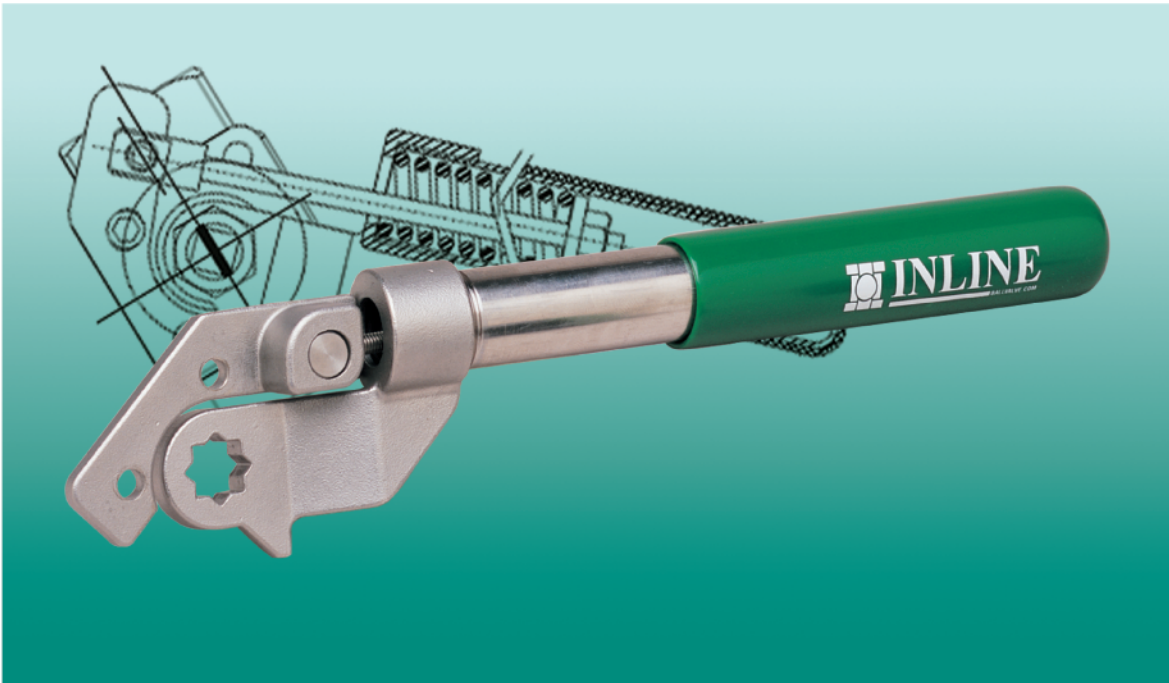


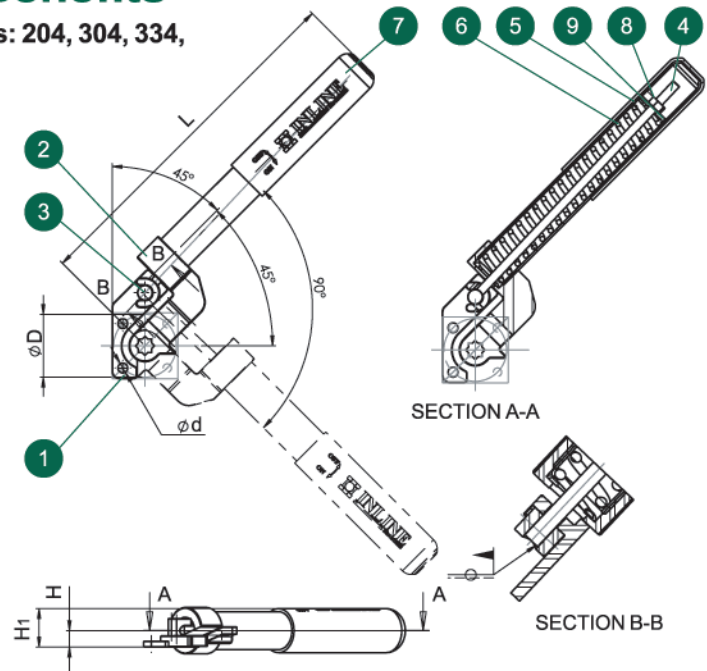
Spring Return Handle



Standard Features and Benefits

- Designed for Use with Inline's Valve Series: 204, 304, 334, 337, 364/367, 384, 514
- Adjustable Torque
- Encapsulated Spring for Safety
- Valve Sizes:
Full Port: 1/4" to 1-1/2"
Standard Port: 1/2" to 2"
- All Stainless Steel

Valve Components			
#	Part Name	Material	Qty
1	AM-M-2-Base	304SS	1
2	AM-M-1-Adapter	304SS	1
3	AM-M-3-Pin	304SS	1
4	AM-M-4-LinkBar	304SS	1
5	AM-M-7-TubeHandle	304SS	1
6	AM-M-9-Spring-Close	ASTM A229	1
7	AM-M-8-TubeHandleSleeve	Vinyl	1
8	B18.2.4.1M - Hex Nut, Style 1, M6 x 1 D-C	304SS	1
9	B18.22M - Plain Washer, 6mm, wide	304SS	1



Dimensions (Inches)							
Valve Size	L	D	d	H	H1	ISO 5211 Pattern	Wt. (lbs)
1/4" ~ 3/4"	9.33	1.65	0.22	1.01	0.43	F04	1.07
1" ~ 1-1/4"	9.35	1.97	0.27	1.07	0.50	F05	1.19
1-1/2" ~ 2"	11.91	2.76	0.35	1.15	0.57	F07	1.61



9056 Garvey Avenue, Rosemead, CA 91770
 Tel: (626) 813-6188 • Fax: (626) 813-6186
 info@ballvalve.com • www.ballvalve.com