

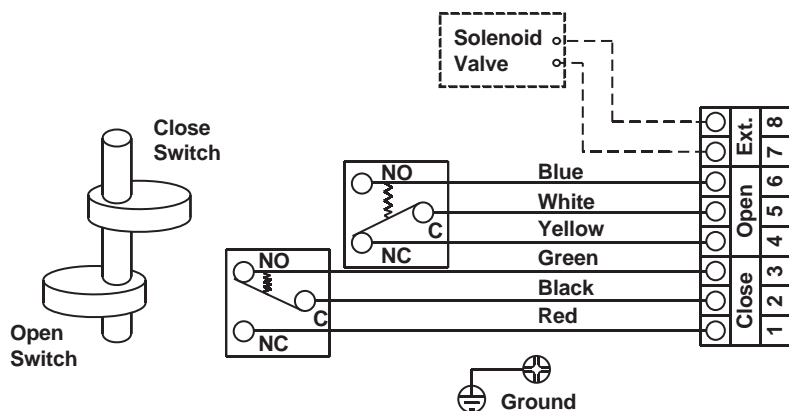
# A-P-INGL Limit Switch



## Standard Features and Benefits

- 1 Aluminum Die-Cast Housing - Powder Coated
- 1 Multi-View Visual Position Indicator - Waterproof
- 1 Quick Set Cams - Spring Loaded
- 1 Multiport Terminal Strip - Easy Access
- 1 Dual Cable Entry - 2 x 1/2
- 1 Captive Bolts on Cover - No Loose Bolts to Lose While Unit is Apart
- 1 Easy Mounting - NAMUR

## (2 SPDT) Wiring Diagram



## Specification

Model		Weather proof	Temperature Range	Cable Entry	Terminal Strips	Position Indicator	Switches
A-P-INGL	Standard	IP67 NEMA 4/4X	-4°F ~ 185°F	2 x 1/2	8 Pts.	0 - 90° Open - Yellow Close - Red	Mechanical (15A125-250VAC) 24 VAC/VDC
	Option			2-M20 x 1.5 2 x 1/2 NPT	9 - 24 Pts.		

