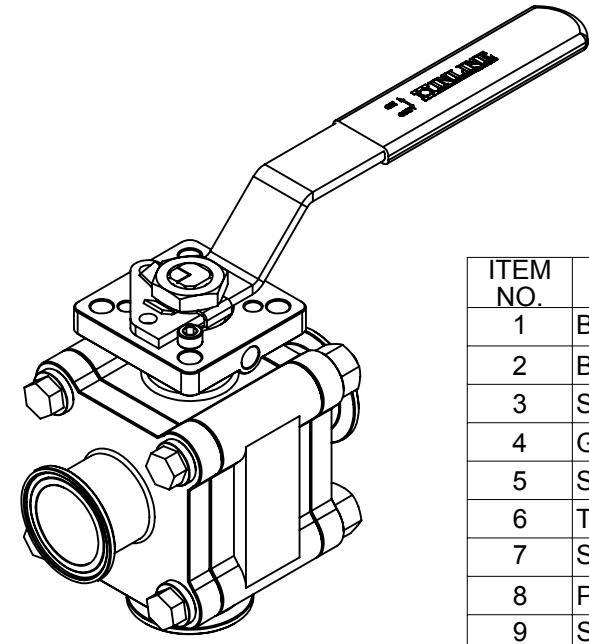
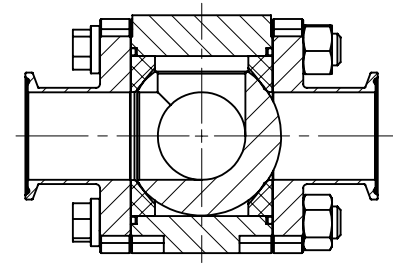
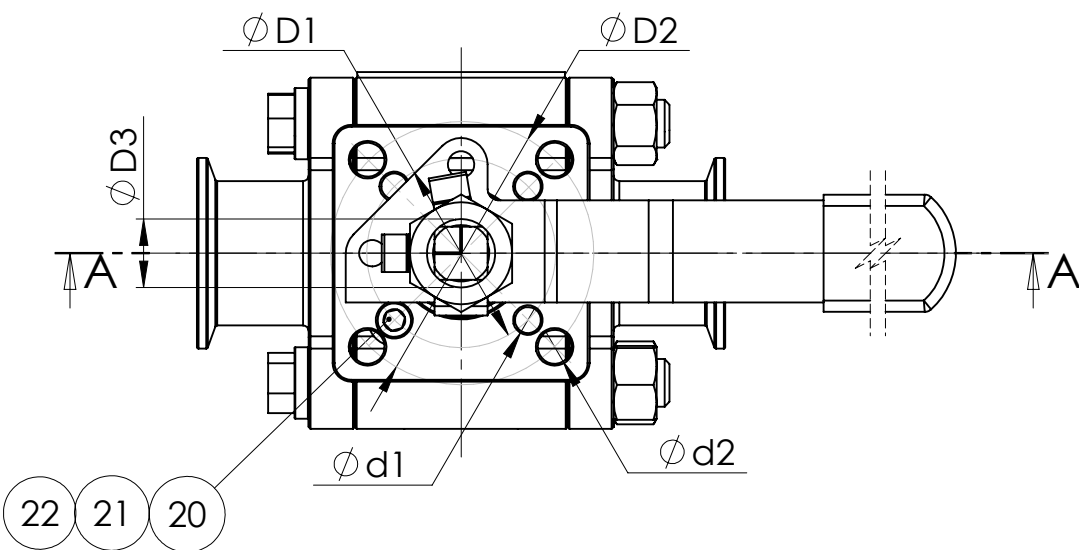
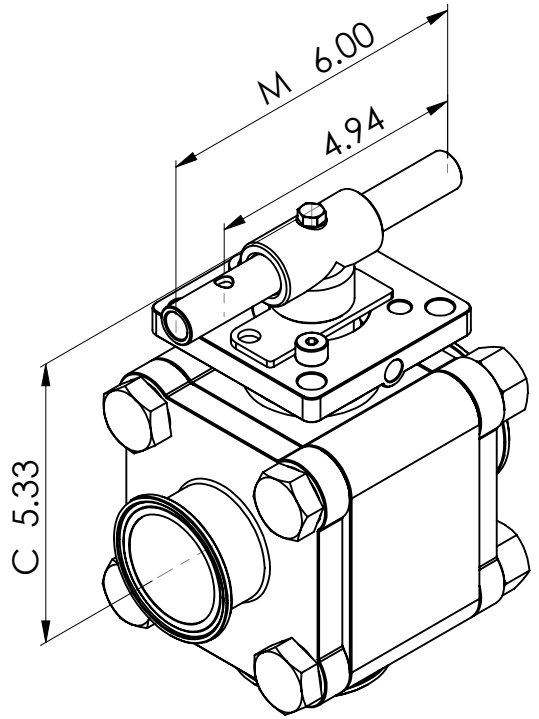


Size	Weight (lbs)	Dimensions (Inches)														
		L	L1	C	P	M	H	h	D1	D2	D3	D4	d1	d2	S	ISO 5211 Pattern
1/2"	2.1	3.50	1.75	3.14	0.37	5.39	1.89	0.38	1.42	1.97	0.47	0.99	0.22	0.28	0.35	F03 / F 05
3/4"	3.5	4.00	2.00	3.26	0.62	6.69	1.98	0.44	1.65	1.97	0.55	1.18	0.22	0.28	0.43	F04 / F 05
1"	5.2	4.50	2.25	3.47	0.87	6.69	2.18	0.42	1.65	1.97	0.47	1.18	0.22	0.28	0.43	F04 / F 05
1 1/2"	10.9	5.50	2.75	4.36	1.37	8.46	2.83	0.60	1.97	2.76	0.71	1.38	0.28	0.35	0.55	F05 / F 07
2"	21.9	6.25	3.13	5.33	1.87	6.00	3.48	0.79	2.76	4.02	0.87	2.17	0.35	0.44	0.67	F07 / F 10

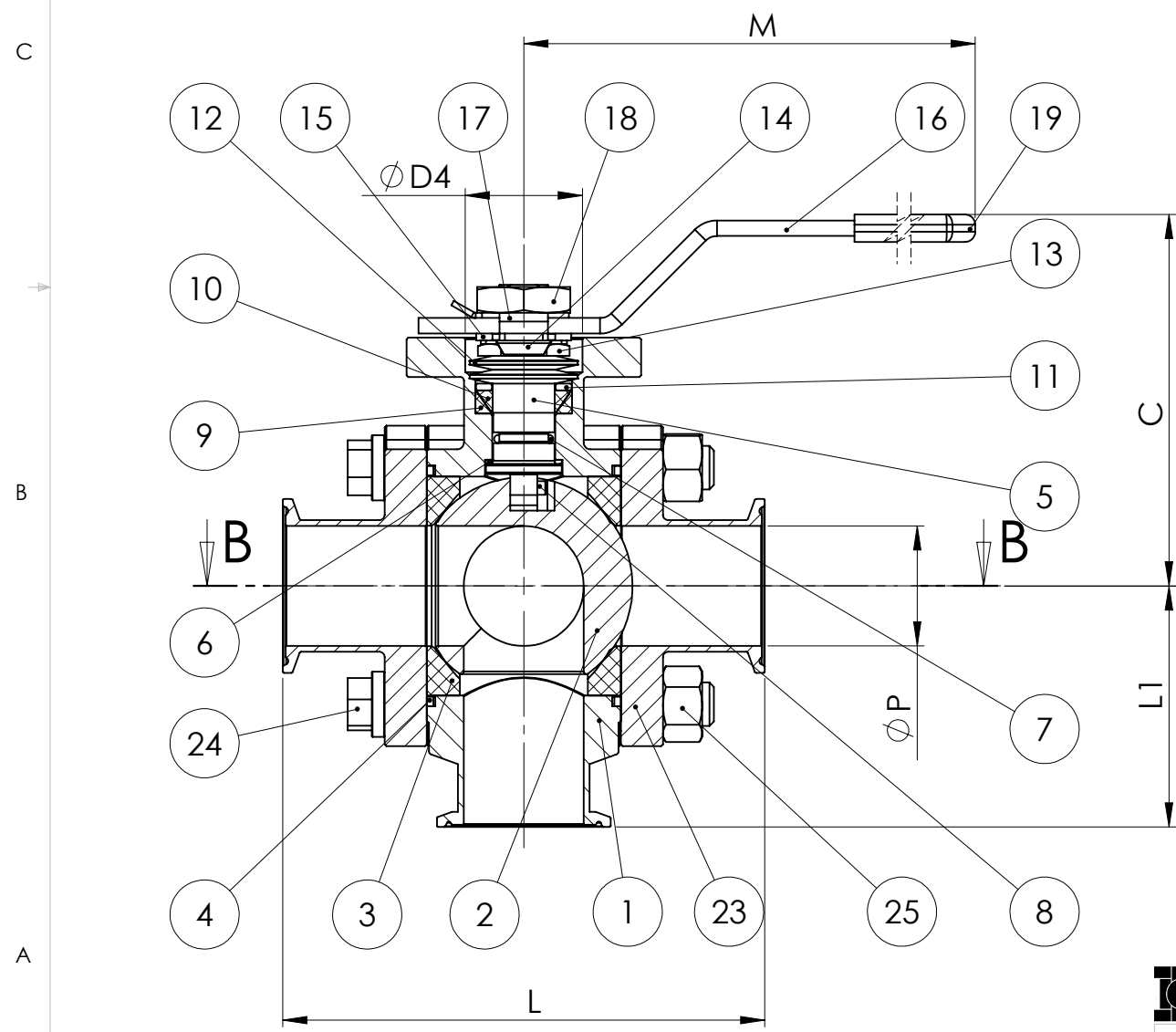


367F - (1/2" ~ 1 1/2")



367F - (2")

ITEM NO.	Part Name	Material	QTY.
1	Body	CF8M	1
2	Ball-SE	316 SS	1
3	Seat	TFM	2
4	Gasket	TFM	2
5	Stem	316 SS	1
6	Thrust Washer	PEEK	1
7	Stem O-Ring	VITON	1
8	Pin	316 SS	1
9	Stem Packing-B	TFM	1
10	Stem Packing-A	TFM	1
11	Packing Gland	304 SS	1
12	Belleville Washer	301 SS	4
13	Gland Nut	304 SS	1
14	Gland Nut Lock Washer	304 SS	1
15	Stem Spacer	304 SS	1
16	Handle	304 SS	1
17	Handle Nut Lock Washer	304 SS	1
18	Handle Nut	304 SS	1
19	Handle Sleeve	VINYL	1
20	Stop Pin	304 SS	1
21	Split Lock Washer	304 SS	1
22	Stop Pin Nut	304 SS	1
23	End Cap	CF8M	2
24	Body Bolt-A	304 SS	4
25	Body Nut	304 SS	4



**SECTION A-A
SCALE 1:2**

INLINE
BALLVALVE.COM
PROPRIETARY AND CONFIDENTIAL
THE INFORMATION CONTAINED IN THIS DRAWING IS THE SOLE PROPERTY OF INLINE INDUSTRIES, INC. ANY REPRODUCTION IN PART OR AS A WHOLE WITHOUT THE WRITTEN PERMISSION OF INLINE INDUSTRIES, INC. IS PROHIBITED.

UNLESS OTHERWISE SPECIFIED:		NAME	DATE	INLINE INDUSTRIES, INC.		
DIMENSIONS ARE IN MM/INCHES WEIGHT IS IN POUNDS		DRAWN	LD			06-03-08
TOLERANCES: FRACTIONAL ± ANGULAR: MACH ± BEND ± TWO PLACE DECIMAL ±		CHECKED				
INTERPRET GEOMETRIC TOLERANCING PER:		ENG APPR.				
MATERIAL 316SS		MFG APPR.			TITLE: 367F Side Entry	
FINISH		Q.A.				
NEXT ASSY	USED ON	COMMENTS:		SIZE	DWG. NO.	REV
				B	367F-BE-Assembly	A-04
APPLICATION		DO NOT SCALE DRAWING		SCALE: 1:2	WEIGHT:	SHEET 1 OF 1